



# Qneck<sup>TM</sup>

Glass Architectural Hardware Product

An Iso 9001 : 2008 Certified Co.



timeless DESIGN & innovative technology  
superior-quality material

Product Catalogue

**Qneck**<sup>TM</sup>

Glass Architectural Hardware Product





Glass Architectural Hardware Product

## About us

### All products are also available in AISI 316 Grade Stainless Steel material in Qneck Brand on a suitable quantity order

Established in the year 2009 Rajkot(Gujrat,India),We "Shri Hari Steel Hardware" are the leading manufacturer and supplier of high quality range of Glass Connector, Shower Fitting, Spider Fitting ,Patch Fitting, Sliding Handle, Glass Door Handle, Glass Hinges and all type of architectural products as per customer requirement. The offered products are manufacture using modern technology and superior quality raw material in accordance with the international norms. With the help of our knowledgeable team member, We are able to manufacture our products as per specific requirement of clients. These products are know their features such as lightweight, durability, sturdiness, easy installation, dimensional accuracy and anti-corrosive. Being a quality-centric firm, our main aim is no satisfy our customer by providing them best quality products in the committed time frame. We are supported by an efficient infrastuctural base that is installed with all the needed machinery and tools that helps us maintain the production process in a hassle-free manner. We have further categorized our infrastructure into various division such as procurement, manufacturing, production, quality control and sales & marketing in order to function smoothly. The entire production process is controlled by our knowledgeable quality experts. All our products are checked on different quality parameters under the super of our quality controllers. In order to ensure safe transit at the clients' end, we also deliver all our products in superior quality packaging material. By focusing on specific needs of our customer, we providing an exclusive range of products. Under the supervision of our proprietor,"Mr.Vijay Patel", we are able to get the full satisfaction of clients. His rich domain knowledge and experience help us in positioning ourselves at the zenith of success.

## Our Team:

Backed by our sincere and talented workforce, we are able to manufacture and supply high quality range of Glass Connector,Shower Fitting, Spider Fitting, Patch Fitting, Sliding Handle, Glass Door Handle, Glass Hinges and all type of architectural products as per customer requirement. We have divided our team in to different parts such as quality controllers, technical staff, skilled professional, marketing manager, researchers and sales executives. Our offered products are available in several specifications to suit the needs of the clients. The team members working with us holds vast knowledge and experience in the domain and always dedicated towards the progress of the company.

## Why Us?:

We have established ourselves as a reputed firm, affianced in manufacturing and supplying a superior quality range of Glass Connector, Shower Fitting, Spider Fitting, Patch Fitting, Sliding Handle, Glass Door Handle, Glass Hinges and all type of architectural products as per customer requirement. And indep all products. Following are some features that have capable us to get the complete satisfaction of our respected customers: () Best quality products () Client centric approach () Skilled team of professionals () Wide distribution network () Ethical business practices () Timely delivery

## Quality Standards:

We delivers in providing quality assured products to our clients. Thus, we ensure that only quality approved products are availed from the vendors. Further, we also check all our products based on certain parameters before the final dispatch. Owing to our quality agenda, we ensure that the products offered to the clients are as per the international quality standards.

## Our Infrastructure:

With the help of our state-of-the-are infrastructure facility, we have been able to offer our clients a qualitative range of products. The infra structural base is well-furnished with advanced equipment and machinery in order to maintain a smooth production process. Our infrastructure is segregated into various divisions such as manufacturing, production, procurement, quality control, research & development, warehouse & packaging, sales & marketing, etc. Our infra structural base helps us fulfill the huge and the immediate requirement of our customer within promised time-frame.



Glass Architectural Hardware Product

The background of the entire page is a low-angle photograph of a modern glass skyscraper. The building's facade is composed of a grid of dark window frames and reflective glass panels. The perspective is looking up from the base of the building, creating a sense of height and architectural scale. A semi-transparent red rectangular overlay is centered over the middle of the image, serving as a backdrop for the main text.

We Are  
Committed to  
Customers  
Satisfaction

# Index



**Floor Spring**  
Page - 1



**Patch Fitting**  
Page - 4



**Glass Connector**  
Page - 11



**Locks without Cutout**  
Page - 15



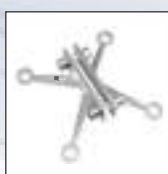
**Shower Fitting**  
Page - 19



**Office Sliding System**  
Page - 21



**Point Fixed Connectors,  
Canopy Fittings**  
Page - 24



**Spider Fitting**  
Page - 29



**Routles**  
Page - 36



**Main Door Handles**  
Page - 41



**Hydraulic Patch Fitting**  
Page - 3



**Shower Hinges**  
Page - 9



**Plastic Profile**  
Page - 14



**Shower Knight Head Accessoriess**  
Page - 17



**Shower Sliding System**  
Page - 20



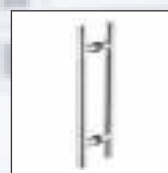
**Sliding Door System**  
Page - 23



**Sliding Folding System**  
Page - 27



**Fin Plate, Splice Plate**  
Page - 34



**Door Handles**  
Page - 37



**Bracket Shelf Holders**  
Page - 44



### Installations

- A. Draw lines and make floor spring pivot center and door-nip pivot coincide with each other.
- B. Drill holes on the floor according to the instructions. The size of the holes must tightly math the floor spring.
- C. Place the floor spring into the holes and positions it.
- D. Raise the door leaf installed with door-nip, and insert the floor spring pivot into the hole of the door leaf.
- E. Adjust the screws at three directions. make them vertical and the upper and lower pivot center coincide with each other.
- F. Adjust the speed of door closing.
- G. Put the decoration cover on the floor spring.

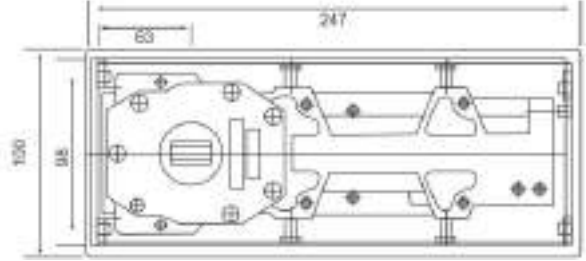
**FLOOR SPRING**



**QFS-6400**  
Single Spring Floor Hinge  
MRP-2900/-

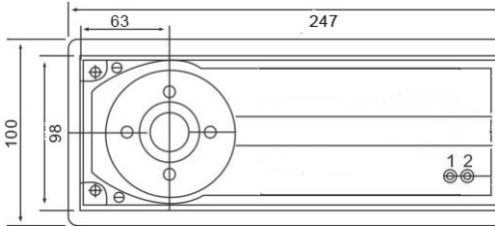
**Specification**

- General design, suitable for left or right hand to open the door in single and both sides.
- Used low temp. hydraulic oil for any climate operation and constant lubrication.
- Suitable for aluminium and wooden doors.
- Suitable for door weight upto 55kgs.
- Closing force 15mm.
- Suitable for maximum wide door leaf(900x2100mm).
- Opening angle 90°/115°



**Specification**

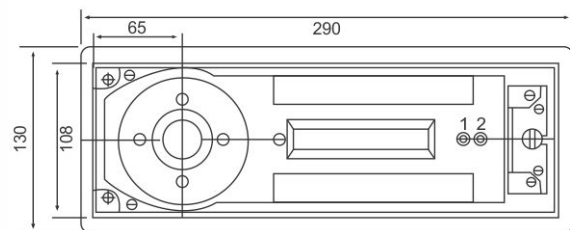
- General design, suitable for left or right hand to open the door in single and both sides.
- Used low temp. hydraulic oil for any climate operation and constant lubrication.
- Suitable for aluminium and wooden doors.
- Suitable for door weight from 60-80kgs.
- Closing force 19mm.
- Suitable for maximum wide door leaf(900x2100mm).
- Opening angle 90°/115°



**QFS-7400**  
Single Spring Floor Hinge  
MRP-3400/-

**Specification**

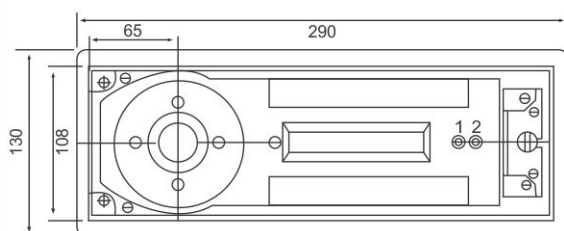
- General design, suitable for left or right hand to open the door in single and both sides.
- Used low temp. hydraulic oil for any climate operation and constant lubrication.
- Suitable for wooden and toughened glass doors.
- Suitable for door weight from 80-120kgs.
- Closing force 25mm.
- Suitable for maximum wide door leaf(1100x2400mm).
- Opening angle 90°/115°



**QFS-8400**  
Double Spring Floor Hinge  
MRP-4400/-

**Specification**

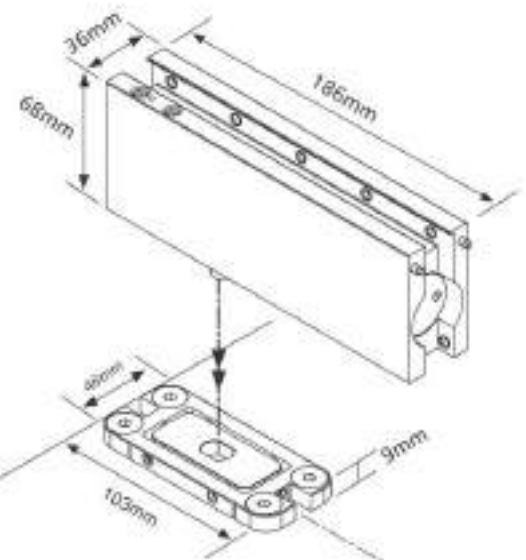
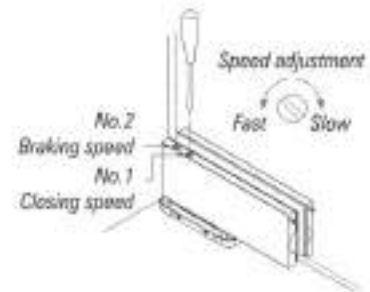
- General design, suitable for left or right hand to open the door in single and both sides.
- Used low temp. hydraulic oil for any climate operation and constant lubrication.
- Suitable for wooden and toughened glass doors.
- Suitable for door weight from 120-150kgs.
- Closing force 25mm.
- Suitable for maximum wide door leaf(1300x2400mm).
- Opening angle 90°/115°



**QFS-9400**  
Double Spring Floor Hinge  
MRP-5400/-



**QHFS-100**  
Hydraulic Floor Spring  
Finish : Matt    Glossy  
MRP : 6625/-    6850/-



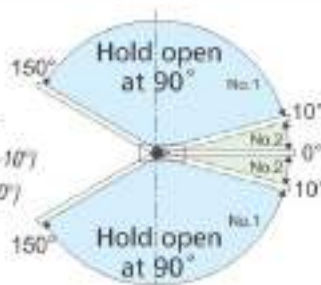
**Specification**

- Suitable door weight : max 100kg
- Suitable door width : 1050mm
- Suitable door thickness : 8~13mm
- Ambient temperature : 200c~+500c
- Quick and easy installation

Max. opening angle: 150° for  
left and right opening (double action)

Hold open at 90°

Two speed adjustment  
Closing Speed (150° - 10°)  
Braking speed (10° - 0°)

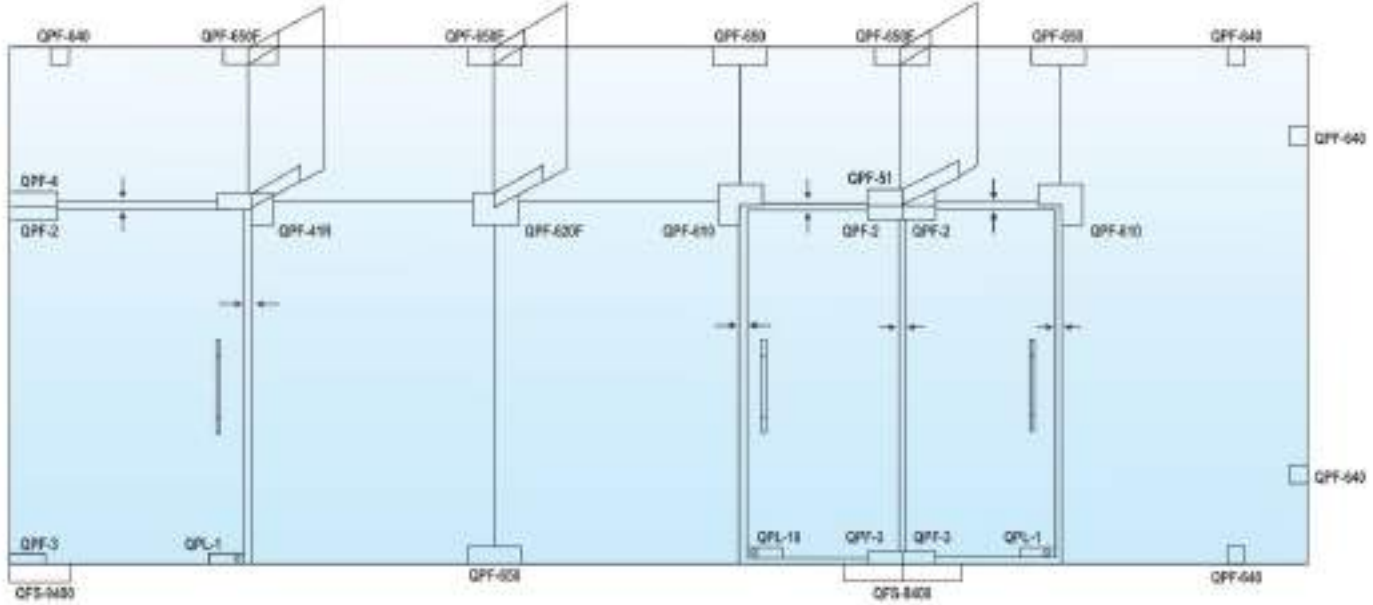




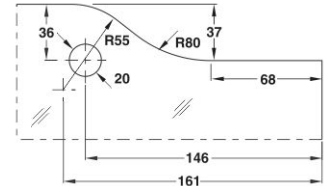
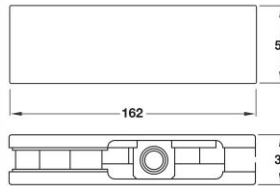


PATCH FITTINGS

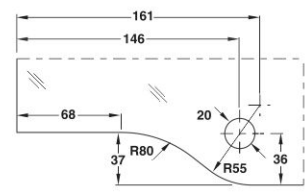
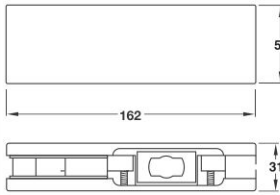
• Satin stainless steel finish • SS 304 cover plates



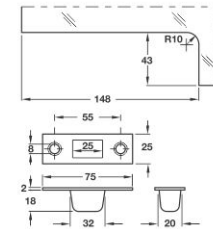
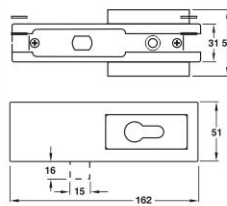
**QPF-2**  
Top Patch  
Finish : Matt Glossy  
MRP : 800/- 900/-



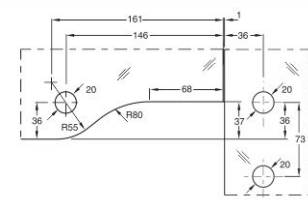
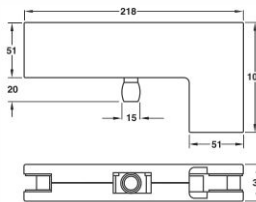
**QPF-3**  
Bottom Patch  
Finish : Matt Glossy  
MRP : 800/- 900/-



**QPL-1**  
Corner Patch Lock  
With Strike Plate  
Finish : Matt Glossy  
MRP : 1750/- 1950/-



**QPF-1**  
Over Panel Side Panel Connecting  
Patch With Pivot (Big L)  
Finish : Matt Glossy  
MRP : 1500/- 1750/-



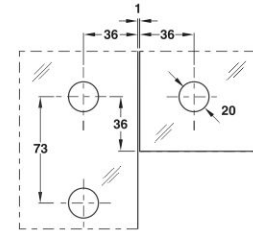
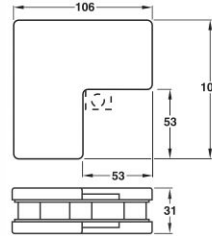
**PATCH FITTINGS**

• Satin stainless steel finish • SS 304 cover plates



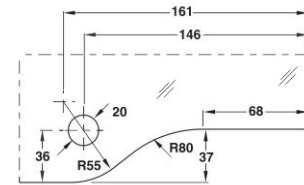
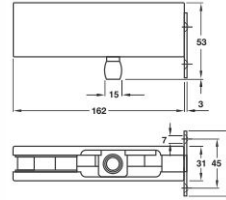
**QPF-610**  
Over Panel Side Panel  
Connecting (Small L)

Finish : Matt      Glossy  
MRP : 900/-      950/-



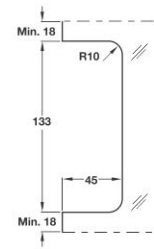
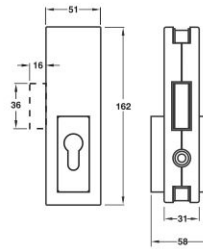
**QPF-4**  
Wall Mounted Over Panel Patch  
With Pivot (Over Panel)

Finish : Matt      Glossy  
MRP : 1000/-      1050/-



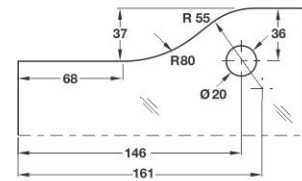
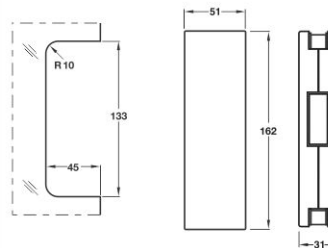
**QPF-2A**  
Center Patch Lock

Finish : Matt      Glossy  
MRP : 1750/-      1950/-



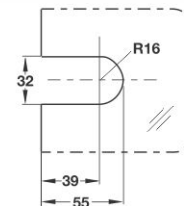
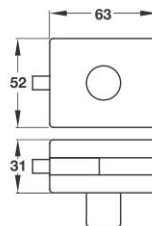
**QPL-2B**  
Center Lock Strike Box

Finish : Matt      Glossy  
MRP : 1500/-      1625/-



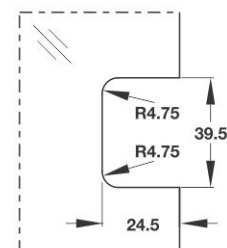
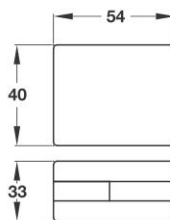
**QPL-3A**  
Patch Lock

Finish : Matt      Glossy  
MRP : 1075/-      1225/-

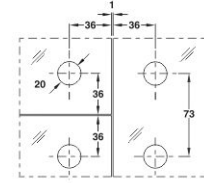
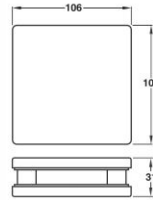


**QPL-3B**  
Strick Box

Finish : Matt      Glossy  
MRP : 950/-      1025/-

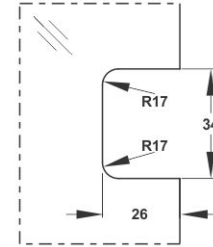
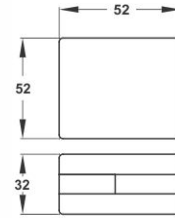


• Satin stainless steel finish • SS 304 cover plates



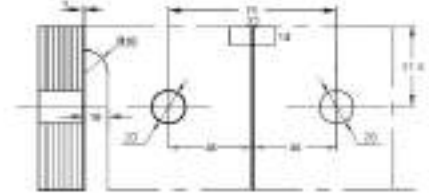
**QPF-620**  
Quadruple Patch

Finish : Matt    Glossy  
MRP : 1825/-    2125/-



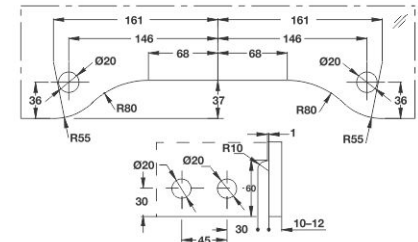
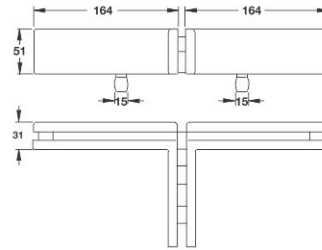
**QPF-640**  
Wall To Glass  
Connecting Patch

Finish : Matt    Glossy  
MRP : 400/-    450/-



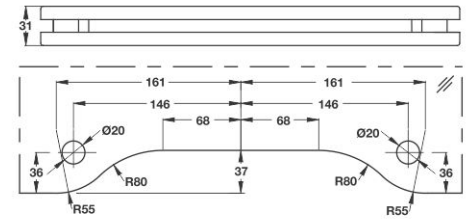
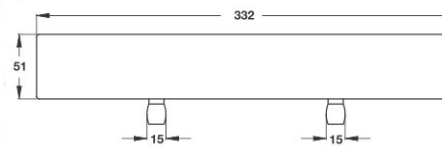
**QPL-650**  
Glass to Glass Connecting  
Patch With Wall/Ceiling

Finish : Matt    Glossy  
MRP : 525/-    612/-



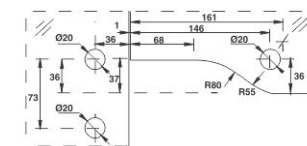
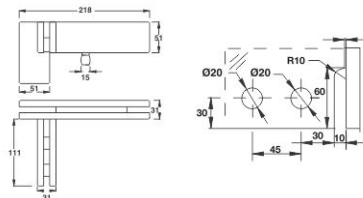
**QPF-51**  
Double Over Panel  
Patch With Fin

Finish : Matt    Glossy  
MRP : 5250/-    5700/-



**QPF-61**  
Double Over Panel Patch

Finish : Matt    Glossy  
MRP : 4825/-    5125/-

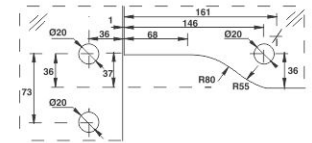
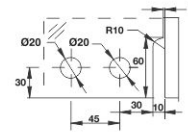
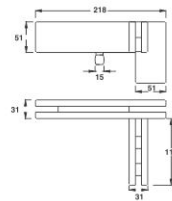


**QPF-41L**  
Over Panel Side Panel  
Connector With Fin (Left)

Finish : Matt    Glossy  
MRP : 5937/-    6250/-

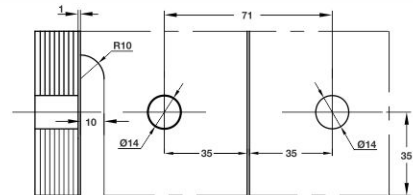
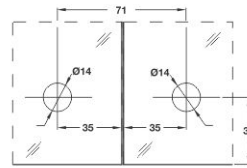
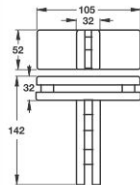
**PATCH FITTINGS**

• Satin stainless steel finish • SS 304 cover plates



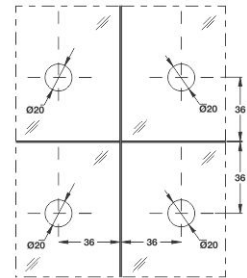
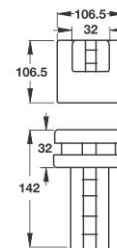
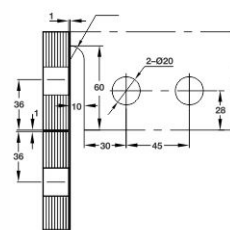
**QPF-41R**  
Over Panel Side Panel  
Connector With Fin(Right)

Finish : Matt    Glossy  
MRP : 5937/-    6250/-



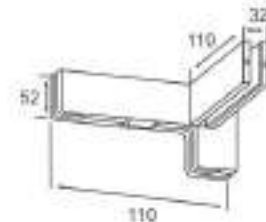
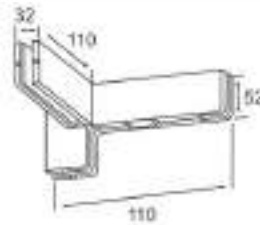
**QPF-650F**  
Connector With Fin

Finish : Matt    Glossy  
MRP : 3200/-    3250/-



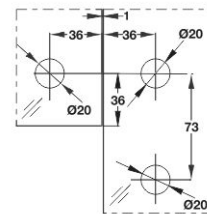
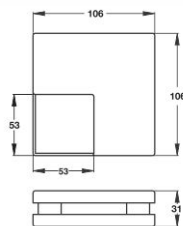
**QPF-620F**  
Quadruple Patch With Fin

Finish : Matt    Glossy  
MRP : 2975/-    3125/-



**QPF-610L/R**  
Triple Glass Patch Connector  
With Fin(Left/Right)

Finish : Matt    Glossy  
MRP : 3200/-    3375/-



**QPL-610ST**  
Over Panel Side Panel Patch  
Connector With Stopper

Finish : Matt    Glossy  
MRP : 1700/-    1875/-



**QFS-ACC-GDP**  
Top Pivot for Patch Fittings Doors  
Finish : Matt    Glossy  
MRP : 200/-    250/-



**QFS-ACC-TP/BP**  
Top Pivot/Bottom Pivot for Wooden/Aluminium Doors  
Finish : Matt    Glossy  
MRP : 240/-    0/-



**QFS-MFH**  
Mini Floor Hinge  
Finish : Matt    Glossy  
MRP : 200/-    225/-

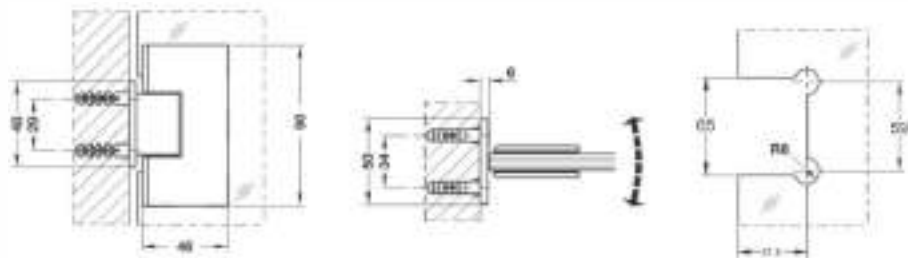


**QGDS**  
Glass Door Stopper  
Finish : Matt    Glossy  
MRP : 225/-    225/-



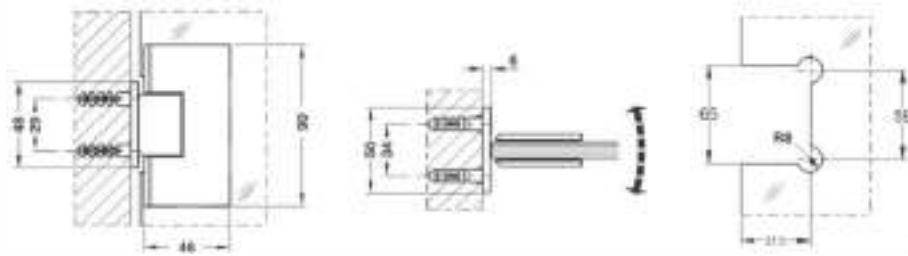
**QSH-1 H/P**  
 Wall to Glass 90° Off Set Hinge  
 Material : Forged Brass  
 Door Thickness : 8mm - 12mm  
 Weight Cap : 45kg  
 Finish : Matt & Chrome Plated

Finish : Matt      Glossy  
 MRP : 0/-        900/-



**QSH-1**  
 Wall to Glass 90° Hinge  
 Material : Forged Brass  
 Door Thickness : 8mm - 12mm  
 Weight Cap : 45kg  
 Finish : Matt & Chrome Plated

Finish : Matt      Glossy  
 MRP : 0/-        900/-



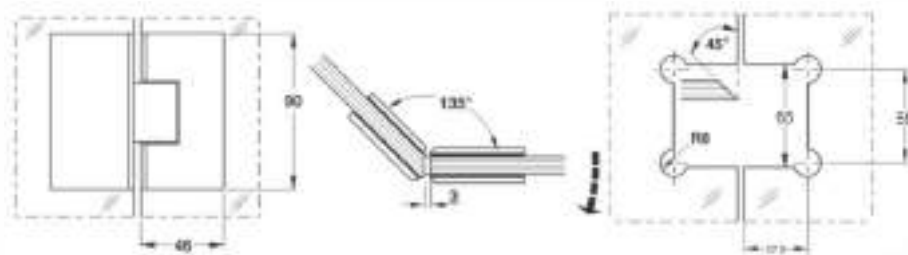
**QSH-2**  
 Glass to Glass 180° Hinge  
 Material : Forged Brass  
 Door Thickness : 8mm - 12mm  
 Weight Cap : 45kg  
 Finish : Matt & Chrome Plated

Finish : Matt      Glossy  
 MRP : 0/-        1375/-



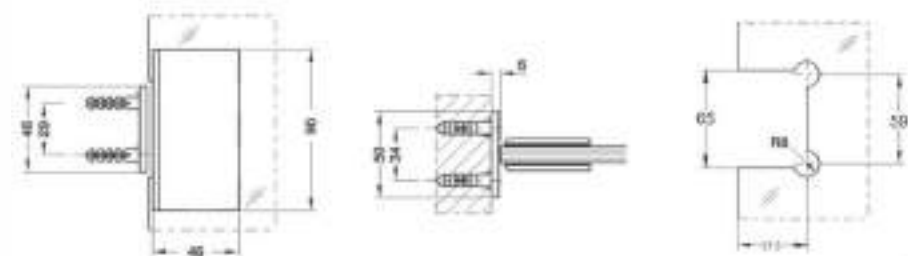
**QSH-3**  
 Glass to Glass 135° Hinge  
 Material : Forged Brass  
 Door Thickness : 8mm - 12mm  
 Weight Cap : 45kg  
 Finish : Matt & Chrome Plated

Finish : Matt      Glossy  
 MRP : 0/-        1375/-



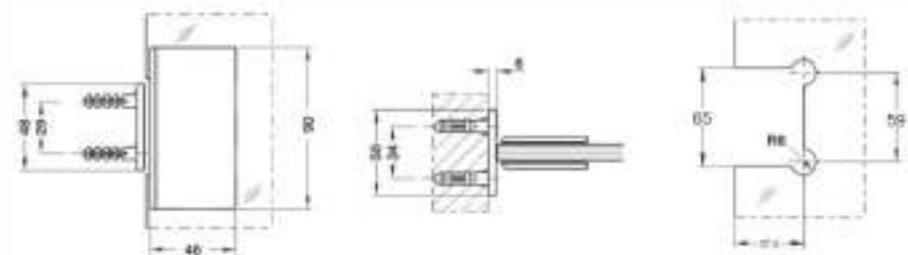
**QSH-4**  
 Glass to Glass 90° Hinge  
 Material : Forged Brass  
 Door Thickness : 8mm - 12mm  
 Weight Cap : 45kg  
 Finish : Matt & Chrome Plated

Finish : Matt      Glossy  
 MRP : 0/-        1250/-



**QSH-5**  
 Wall to Glass 90° Fixed Bracket  
 Material : Forged Brass  
 Door Thickness : 8mm - 12mm  
 Weight Cap : 45kg  
 Finish : Matt & Chrome Plated

Finish : Matt      Glossy  
 MRP : 0/-        1375/-



## SHOWER HINGES (Premium Series)



**QSH-111 H/P**  
 Wall to Glass 90° Off Set Hinge  
 Material : SS  
 Door Thickness : 8mm - 12mm  
 Weight Cap : 45kg  
 Finish : Matt & Chrome Plated

Finish : Matt    Glossy  
 MRP : 2025/-    2260/-



**QSH-111**  
 Wall to Glass 90° Hinge  
 Material : SS  
 Door Thickness : 8mm - 12mm  
 Weight Cap : 45kg  
 Finish : Matt & Chrome Plated

Finish : Matt    Glossy  
 MRP : 2025/-    2260/-



**QSH-222**  
 Glass to Glass 180° Hinge  
 Material : SS  
 Door Thickness : 8mm - 12mm  
 Weight Cap : 45kg  
 Finish : Matt & Chrome Plated

Finish : Matt    Glossy  
 MRP : 3025/-    3397/-



**QSH-333**  
 Glass to Glass 135° Hinge  
 Material : SS  
 Door Thickness : 8mm - 12mm  
 Weight Cap : 45kg  
 Finish : Matt & Chrome Plated

Finish : Matt    Glossy  
 MRP : 3025/-    3397/-



**QSH-444**  
 Glass to Glass 90° Hinge  
 Material : SS  
 Door Thickness : 8mm - 12mm  
 Weight Cap : 45kg  
 Finish : Matt & Chrome Plated

Finish : Matt    Glossy  
 MRP : 3025/-    3397/-



**QSH-555**  
 Wall to Glass 90° Fixed Bracket  
 Material : SS  
 Door Thickness : 8mm - 12mm  
 Weight Cap : 45kg  
 Finish : Matt & Chrome Plated

Finish : Matt    Glossy  
 MRP : 1325/-    1525/-



• Premium Series : Brass • Eco Series : Zinc





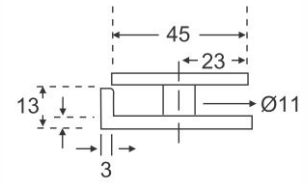
# GLASS CONNECTORS (Premium Series)

• Premium Series : 4mm Thickness



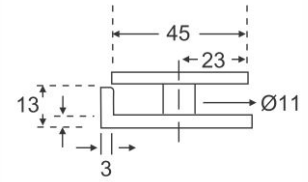
**QGC-1A**  
U Connector  
Material : Stainless Steel 304  
Door Thickness : 8mm - 12mm  
Finish : Matt & Chrome Plated

Finish : Matt    Glossy  
MRP : 275/-    325/-



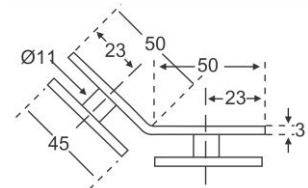
**QGC-1**  
U Connector  
Material : Stainless Steel 304  
Door Thickness : 8mm - 12mm  
Finish : Matt & Chrome Plated

Finish : Matt    Glossy  
MRP : 275/-    325/-



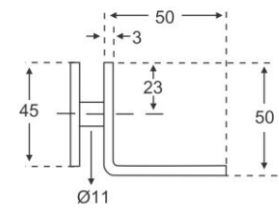
**QGC-2**  
Glass to Glass 135°  
Material : Stainless Steel 304  
Door Thickness : 8mm - 12mm  
Finish : Matt & Chrome Plated

Finish : Matt    Glossy  
MRP : 500/-    550/-



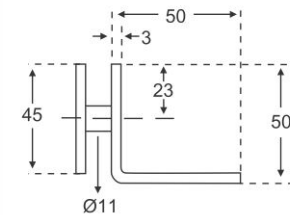
**QGC-3**  
Glass to Glass 90°  
Material : Stainless Steel 304  
Door Thickness : 8mm - 12mm  
Finish : Matt & Chrome Plated

Finish : Matt    Glossy  
MRP : 500/-    550/-



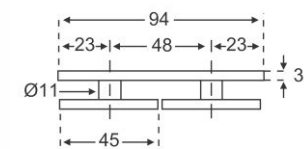
**QGC-4**  
L Connector  
Material : Stainless Steel 304  
Door Thickness : 8mm - 12mm  
Finish : Matt & Chrome Plated

Finish : Matt    Glossy  
MRP : 425/-    450/-



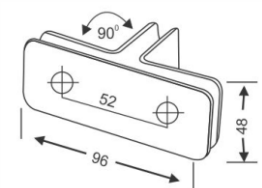
**QGC-5**  
Glass to Glass 180°  
Material : Stainless Steel 304  
Door Thickness : 8mm - 12mm  
Finish : Matt & Chrome Plated

Finish : Matt    Glossy  
MRP : 425/-    450/-



**QGC-6**  
T-Connector Glass to Glass 90°  
Material : Stainless Steel 304  
Door Thickness : 8mm - 12mm  
Finish : Matt & Chrome Plated  
Suitable for holding 3 Glasses together

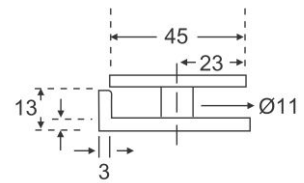
Finish : Matt    Glossy  
MRP : 1025/-    1100/-





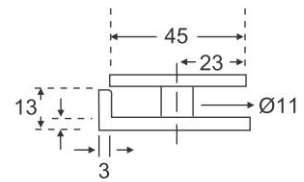
**QGC-11A**  
 U Connector  
 Material : Stainless Steel 304  
 Door Thickness : 8mm - 12mm  
 Finish : Matt & Chrome Plated

Finish : Matt      Glossy  
 MRP : 170/-      187/-



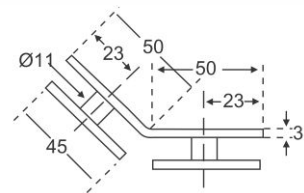
**QGC-11**  
 U Connector  
 Material : Stainless Steel 304  
 Door Thickness : 8mm - 12mm  
 Finish : Matt & Chrome Plated

Finish : Matt      Glossy  
 MRP : 170/-      187/-



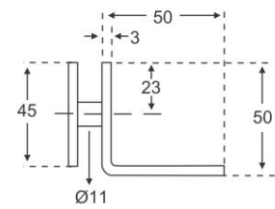
**QGC-22**  
 Glass to Glass 135°  
 Material : Stainless Steel 304  
 Door Thickness : 8mm - 12mm  
 Finish : Matt & Chrome Plated

Finish : Matt      Glossy  
 MRP : 350/-      375/-



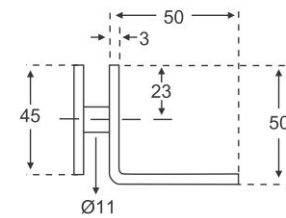
**QGC-33**  
 Glass to Glass 90°  
 Material : Stainless Steel 304  
 Door Thickness : 8mm - 12mm  
 Finish : Matt & Chrome Plated

Finish : Matt      Glossy  
 MRP : 350/-      375/-



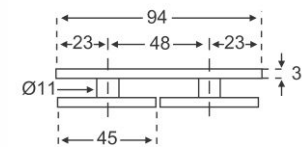
**QGC-44**  
 L Connector  
 Material : Stainless Steel 304  
 Door Thickness : 8mm - 12mm  
 Finish : Matt & Chrome Plated

Finish : Matt      Glossy  
 MRP : 220/-      250/-



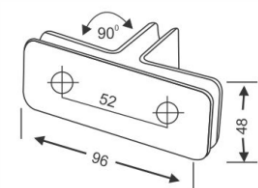
**QGC-55**  
 Glass to Glass 180°  
 Material : Stainless Steel 304  
 Door Thickness : 8mm - 12mm  
 Finish : Matt & Chrome Plated

Finish : Matt      Glossy  
 MRP : 350/-      375/-



**QGC-66**  
 T-Connector Glass to Glass 90°  
 Material : Stainless Steel 304  
 Door Thickness : 8mm - 12mm  
 Finish : Matt & Chrome Plated  
 Suitable for holding 3 Glasses together

Finish : Matt      Glossy  
 MRP : 875/-      937/-



**PLASTIC PROFILES**



**QPS-01**  
Wall Seal  
For : 8/10/12mm Glass  
Size : 2.2mtr - 2.5mtr  
MRP : 162/-



**QPS-02**  
Central Seal  
For : 8/10/12mm Glass  
Size : 2.2mtr - 2.5mtr  
MRP : 162/-



**QPS-03**  
Central 180° Weather Seal  
For : 8/10/12mm Glass  
Size : 2.2mtr - 2.5mtr  
MRP : 162/-



**QPS-04**  
Central 180° Weather Seal  
For : 8/10/12mm Glass  
Size : 2.2mtr - 2.5mtr  
MRP : 162/-



**QPS-06**  
Water Dispersar Seal  
For : 8/10/12mm Glass  
Size : 2.2mtr - 2.5mtr  
MRP : 162/-

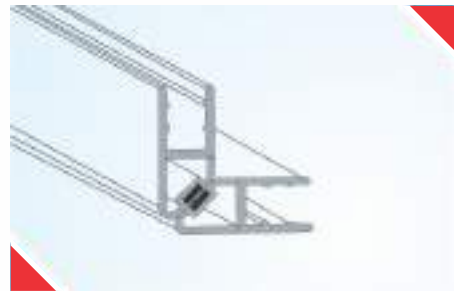
**Magnetic Profiles**



**QPS-M1 180°**  
Magnetic Seal for 180° Connection  
For : 8/10/12mm Glass  
Size : 2.2mtr - 2.5mtr  
MRP : 925/-



**QPS-M2 135°**  
Magnetic Seal for 135° Connection  
For : 8/10/12mm Glass  
Size : 2.2mtr - 2.5mtr  
MRP : 925/-



**QPS-M3 90°**  
Magnetic Seal for 90° Connection  
For : 8/10/12mm Glass  
Size : 2.2mtr - 2.5mtr  
MRP : 925/-





# LOCKS WITHOUT CUTOUT



**QLK-3**  
Double Door Lock  
(Key & Knob) MRP : 1875/-



**QLK-4**  
Single Door Lock  
(Key & Knob) MRP : 1625/-



**QLK-13**  
Double Door Lock  
(Only Knob) MRP : 1625/-



**QLK-14**  
Single Door Lock  
(Only Knob) MRP : 1250/-



**QLK-15**  
Single Door Lock  
(Only Knob) MRP : 1250/-



**QLK-16**  
Single Door Lock  
(Only Knob) MRP : 1250/-





# SHOWER KNIGHT HEAD ACCESSORIES



## Door Knob



**QKH-1**  
Wall to Rod (Dia 19mm)  
Finish : Matt    Glossy  
MRP : 250/-    270/-



**QKH-111**  
Wall to Track Connector  
Finish : Matt    Glossy  
MRP : 500/-    525/-



**QDH-1**  
Door Knob  
Finish : Matt    Glossy  
MRP : 675/-    700/-



**QKH-2**  
Rod to Glass (Dia 19mm)  
Finish : Matt    Glossy  
MRP : 275/-    300/-



**QKH-222**  
Track to Glass Connector  
Finish : Matt    Glossy  
MRP : 550/-    575/-



**QDK-2**  
Door Knob  
Finish : Matt    Glossy  
MRP : 675/-    700/-



**QKH-3**  
Rod to Rod (Dia 19mm)  
Finish : Matt    Glossy  
MRP : 737/-    775/-



**QKH-333**  
Track to Track Connector  
Finish : Matt    Glossy  
MRP : 762/-    800/-



**QKH-3**  
Door Knob  
Finish : Matt    Glossy  
MRP : 675/-    700/-



**QKH-4**  
Rod to Glass (One Side Blind)  
Finish : Matt    Glossy  
MRP : 300/-    325/-



**QKH-ACC-19**  
Reinforcing Rod (Dia 19mm)  
Finish : Matt    Glossy  
MRP : 312/-    325/-



**QDK-4**  
Door Knob  
Finish : Matt    Glossy  
MRP : 675/-    700/-



**QKH-5**  
Rod to Rod T Connector (Dia 19mm)  
Finish : Matt    Glossy  
MRP : 662/-    675/-



**QKH-ACC-10/30**  
Connecting Track (Available in 1.5, 1.8, 2.1 Mt)  
Finish : Matt    Glossy  
MRP : 337/-    350/-



**QDK-5**  
Door Knob  
Finish : Matt    Glossy  
MRP : 500/-    525/-



**QSHS-1101**  
Wall to Glass  
Finish : Matt Glossy  
MRP : 3125/- 3281/-



**QSHS-1102**  
Glass to Glass  
Finish : Matt Glossy  
MRP : 3875/- 4068/-



**QSHS-1107**  
Wall to Glass  
Finish : Matt Glossy  
MRP : 875/- 918/-



**QSHS-1108**  
Glass to Glass  
Finish : Matt Glossy  
MRP : 900/- 945/-



**QSHS-1114**  
Glass to Glass  
Finish : Matt Glossy  
MRP : 1287/- 1351/-



**QSHS-1109**  
Wall to Glass  
Finish : Matt Glossy  
MRP : 875/- 918/-



**QSHS-1607**  
Wall to Glass  
Finish : Matt Glossy  
MRP : 850/- 892/-



**QSHS-1601**  
Wall to Glass  
Finish : Matt Glossy  
MRP : 3593/- 3773/-



**QSHS-1602**  
Glass to Glass  
Finish : Matt Glossy  
MRP : 4456/- 4679/-



**QSHS-1614**  
Glass to Glass  
Finish : Matt Glossy  
MRP : 950/- 997/-



**QSH-902**  
Glass to Glass Shower Hings  
Finish : Matt Glossy  
MRP : 1375/- 1443/-



**QPSH-55**  
Glass Connector  
Finish : Matt Glossy  
MRP : 800/- 840/-



# SHOWER SLIDING SYSTEM



**QSL-11-A1**  
Roller  
Finish : Matt    Glossy  
MRP : 925/-    950/-



**QSL-11-A2**  
Track to Glass Holder  
Finish : Matt    Glossy  
MRP : 650/-    675/-



**QSL-11-A3**  
Stopper  
Finish : Matt    Glossy  
MRP : 800/-    825/-



**QSL-11-A4**  
Floor Guide  
Finish : Matt    Glossy  
MRP : 500/-    525/-



**QSL-11-A5**  
Wall to Track Connector  
Finish : Matt    Glossy  
MRP : 500/-    525/-



**QSL-11-Track**  
Shower Sliding Track  
(Available in 1.5, 1.8, 2.1 Mt)  
Finish : Matt    Glossy  
MRP : 337/-    350/-

### SET

QSL-11-A1	2-Pcs.
QSL-11-A2	2-Pcs.
QSL-11-A3	2-Pcs.
QSL-11-A4	1-Pcs.
QSL-11-A5	2-Pcs.
Finish : Matt	Glossy
MRP : 5225/-	5500/-





**QSL-44-A1**  
Roller

Metal : 2000/-  
PVC : 1625/-



**QSL-44-A2**  
Roller

Finish : Matt    Glossy  
MRP : 2625/-    2750/-

**OFFICE SLIDING SYSTEM**



**QSL-44-A3**  
Stopper  
MRP : 150/-



**QSL-44-A5**  
Wall to Track Clamp  
Finish : Matt    Glossy  
MRP : 425/-    450/-



**QSL-44-A6**  
Glass to Track Clamp  
MRP : 575/-



**QSL-44-A8**  
90° Track Connector  
MRP : 625/-



**QSL-HN-50**  
Sliding Handle  
Finish : Matt    Glossy  
MRP : 775/-    867/-



**QSL-HN-60**  
Sliding Handle  
Finish : Matt    Glossy  
MRP : 775/-    867/-



**QSL-HN-70**  
Sliding Handle(Square)  
Finish : Matt    Glossy  
MRP : 1025/-    1125/-



**QSL-HN-80**  
Sliding Handle(Rectangle)  
Finish : Matt    Glossy  
MRP : 1025/-    1125/-



**QSL-HN-90**  
Sliding Handle(Rectangle)  
Finish : Matt    Glossy  
MRP : 1250/-    1375/-



**QSL-44G**  
Floor Guide  
Finish : Matt    Glossy  
MRP : 250/-    270/-



**QSDL-13A+13C**  
Sliding Door Lock with Strike Plate  
MRP : 8300/-



**QSDL-13A**    **QSDL-13B**  
Sliding Door Lock    Strike Box  
MRP : 8250/-    MRP : 8300/-



**QSDL-13D**  
Strike Box for Over Lap Glass  
MRP : 7125/-



**QSL-44-B1**  
Aluminium Track(Single)  
Available in 8,10,13 & 16 Ft.  
MRP : 390/- Per Ft.



**QSL-44-B2**  
Aluminium Track(Double Door)  
Available in 8,10,13 & 16 Ft.  
MRP : 390/- Per Ft.



**QSL-44-B3**  
Aluminium Track(Door+Fix Glass)  
Available in 8,10,13 & 16 Ft.  
MRP : 390/- Per Ft.



**QSL-44-A9**  
Wall to Track Connector  
MRP : 125/-



**QSL-22A**  
Office Sliding Roller  
MRP : 5000/-



**QSL-33A**  
Office Sliding Roller  
MRP : 6500/-



**QSL-33-TH-WL**  
Wall to Rod Holder  
MRP : 1250/-



**QSL-33-TH-G2**  
Glass to Rod Clamp  
MRP : 1125/-



**QSL-33G**  
Floor Guide  
MRP : 270/-



**QSL-33B**  
Door Stopper  
MRP : 1150/-



**QSL-33-TH**  
Wall to Rod Clamp  
MRP : 1110/-



**QSL-33H**  
Glass to Glass Connector 180°  
MRP : 1437/-



**QSL-ACC-25**  
Shower Sliding Pipe  
MRP : 687/-



# POINT FIXED GLASS CONNECTORS



**QPC-1**  
Wall to Glass (Adjustable)

Available Size	Matt
52mm	1450/-
62mm	1450/-
75mm	1550/-
82mm	1550/-
103mm	1675/-



**QPC-2**  
Wall to Glass (Fix)

Available Size	Matt
52mm	1200/-
62mm	1200/-
75mm	1300/-
82mm	1300/-
103mm	1420/-



**QPC-3**  
Glass to Glass (Adjustable)

Available Size	Matt
52mm	1450/-
62mm	1450/-
75mm	1550/-
82mm	1550/-
103mm	1675/-



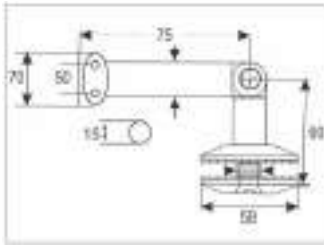
**QPC-4**  
Glass to Glass (Adjustable with Fin)

Available Size	Matt
52mm	3150/-
62mm	3150/-
75mm	3375/-
82mm	3375/-
103mm	3687/-





**CANOPY FITTINGS**

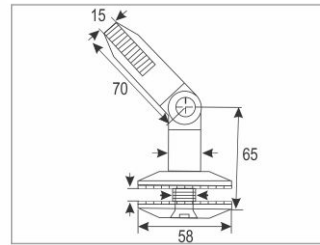


**Specification**

- Finish : Satin stainless steel (SSS)
- Suitable for canopies in interior & exterior
- Stainless steel 304 Grade
- To fix glass with the wall
- Adjustable angle
- Washer to prevent glass from damage

**QCF-1**

Wall to Glass Connector  
 Finish : Matt Glossy  
 MRP : 1750/- 1775/-

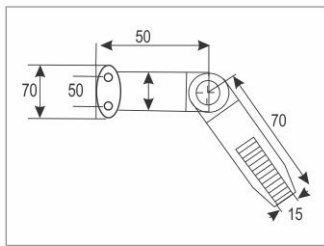


**Specification**

- Finish : Satin stainless steel (SSS)
- Suitable for holding canopies glass with rod along with wall to rod
- Stainless steel 304 Grade
- To hold canopy glass with rod
- Adjustable angle
- Washer to prevent glass from damage

**QCF-2**

Rod to Glass Connector  
 Finish : Matt Glossy  
 MRP : 1687/- 1771/-



**Specification**

- Finish : Satin stainless steel (SSS)
- Suitable for holding wall to rod with wall
- Stainless steel 304 Grade
- To hold rod with the wall
- Adjustable angle
- Washer to prevent glass from damage

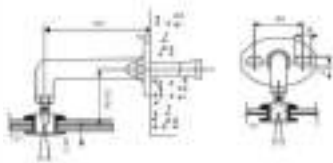
**QCF-3**

Wall to Rod Connector  
 Finish : Matt Glossy  
 MRP : 1500/- 1537/-



**QCF-ROD(16mm/12mm)**

Canopy Rod with Thread  
 Size : 16mm 12mm  
 MRP : 625/- 425/-

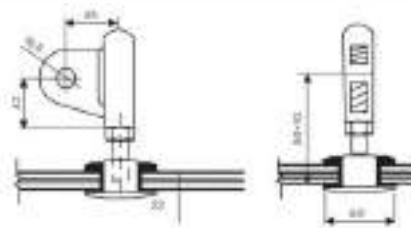


**Specification**

- Finish : Satin stainless steel (SSS)
- Threaded portion to adjust the height
- Teflon washers to prevent damage to the glass
- Stainless steel 304 Grade
- Firm base to have a secure seating
- Flat head bolt

**QCF-11**

Hold Glass with the Wall at 90°  
 Finish : Matt Glossy  
 MRP : 3725/- 3825/-

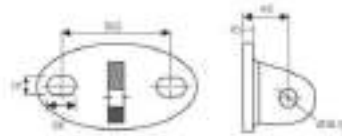


**Specification**

- Finish : Satin stainless steel (SSS)
- Length adjustable
- More gripping surface
- Flat head bolt
- Stainless steel 304 Grade

**QCF-22**

Hold Glass for Canopy with Cable/Rod with OCF-33  
 Finish : Matt Glossy  
 MRP : 2100/- 2350/-

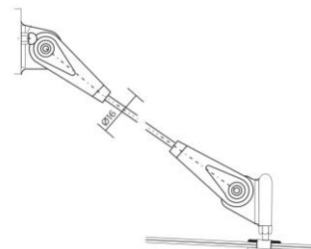


**Specification**

- Finish : Satin stainless steel (SSS)
- To be used with a Cable or Rod
- More gripping surface
- Firm base to have a secure seating
- Suitable for canopy of 2m x 2m with two pairs
- Stainless steel 304 Grade

**QCF-33**

Hold the Cable/Rod with the Wall  
 Finish : Matt Glossy  
 MRP : 2625/- 2875/-



**Specification**

- Finish : Satin stainless steel (SSS)
- To be used with a Cable or Rod
- Recommended with 16mm connecting rod
- Stainless steel 304 Grade

**QCF-44**

Couple QCF-22 and QCF-33 using Connecting Rod/Cable  
 Finish : Matt Glossy  
 MRP : 3525/- 4025/-



### Specification

- Track for sliding folding door system to be mounted to the ceiling and floor

### Note :-

- Maximum weight per door : 70kg
- Maximum width per door : 900mm
- Maximum height per door : 2500mm
- Suitable for 8 to 10mm glass thickness



Two Way Open



One Way Open



**SLIDING FOLDING SYSTEM**



**QSFs-1**  
Fixed Hinge  
Finish : Matt    Glossy  
MRP : 4000/-    4562/-



**QSFs-2**  
Glass to Glass Center Hinge  
Finish : Matt    Glossy  
MRP : 5550/-    6300/-



**QSFs-3**  
Center Hinge With Roller  
Finish : Matt    Glossy  
MRP : 6600/-    7537/-



**QSFs-4**  
End Hinge with Roller  
Finish : Matt    Glossy  
MRP : 3950/-    4512/-



**QSFs-5**  
Floor Fixed Hinge  
Finish : Matt    Glossy  
MRP : 4000/-    4562/-



**QSFs-6**  
Glass to Glass Center Hinge with Lock  
Finish : Matt    Glossy  
MRP : 7750/-    8875/-



**QSFs-7**  
Glass to Glass Center hinge with Guide  
Finish : Matt    Glossy  
MRP : 5550/-    6300/-



**QSFs-8**  
End Hinge with Guide  
Finish : Matt    Glossy  
MRP : 3200/-    3575/-



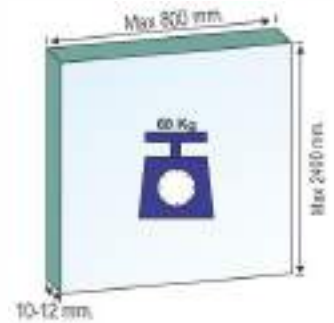
**QSFs-9**  
Wall To Glass Hinge  
Finish : Matt    Glossy  
MRP : 3556/-    3925/-



**QKSFS-10**  
Floor Track Bottom(S.S)  
Finish : Matt    Glossy  
MRP : 900/-    950/-



**QSFs-11**  
Aluminium Track(Top)  
MRP : 775/-




**Note :-**

• Maximum weight per door : 70kg • Maximum width per door : 900mm • Maximum height per door : 2500mm • Suitable for 8 to 10mm glass

**Frameless Center Folding Systems**

No need to grout in the floor with frameless center folding systems suitable for mall, showrooms, hotels and airport, etc.



**QCFS-1**  
Folding Door Roller  
Finish : Matt    Glossy  
MRP : 1250/-    1437/-



**QCFS-2**  
Glass to Wall Hinge  
Finish : Matt    Glossy  
MRP : 3125/-    3500/-



**QCFS-3**  
Glass to Glass Hinge  
Finish : Matt    Glossy  
MRP : 4250/-    4812/-



**QCFS-LK**  
Sliding Glass Door Look  
MRP : 8300/-



**QCFS-4**  
Glass Door Knob  
MRP : 1700/-



**QCFS-5**  
Knob Sleeve  
MRP : 625/-



**QCFS-6**  
Aluminium Track  
MRP : 775/-

# SPIDER FITTINGS

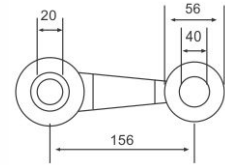






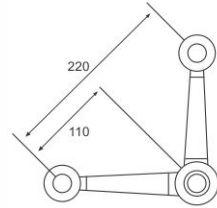
**QSP-B1** Finish : Matt Glossy  
One Way Spider without Fin MRP : 1297/- 1350/-

- Specification**
- 156 mm arm
  - One Way Spider without fin to hold the glass at one point
  - Materials : Stainless Steel 316 Grade
  - Hold glass with the help of articulated/fix routels.
  - Designed to Hold with fix Structure



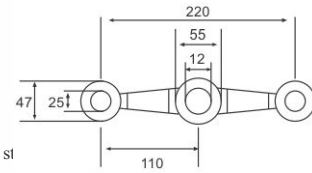
**QSP-B2 (90°)** Finish : Matt Glossy  
Two Way Spider 90° without Fin MRP : 2600/- 2800/-

- Specification**
- Two Way Spider without fin to hold two glass panels at 90° with fixed structure
  - Materials : Stainless Steel 316 Grade
  - Hold glass with the help of articulated/fix routels.
  - Designed to Hold with fix Structure



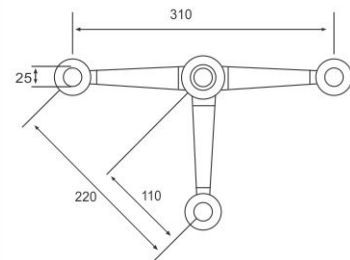
**QSP-B2 (180°)** Finish : Matt Glossy  
Two Way Spider 180° without Fin MRP : 2272/- 2472/-

- Specification**
- 220 mm arm
  - Two Way Spider without fin to hold two glass panels at 180° with fixed structure
  - Materials : Stainless Steel 316 Grade
  - Hold glass with the help of articulated/fix routels.
  - Designed to Hold with fix Structure



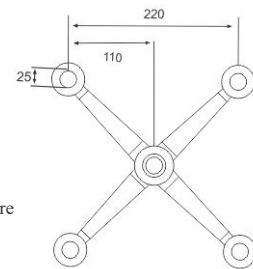
**QSP-B3** Finish : Matt Glossy  
Three Way Spider without Fin MRP : 2875/- 3125/-

- Specification**
- Three Way Spider without fin to hold three glass panels
  - Materials : Stainless Steel 316 Grade
  - Hold glass with the help of articulated/fix routels.
  - Designed to Hold with fix Structure



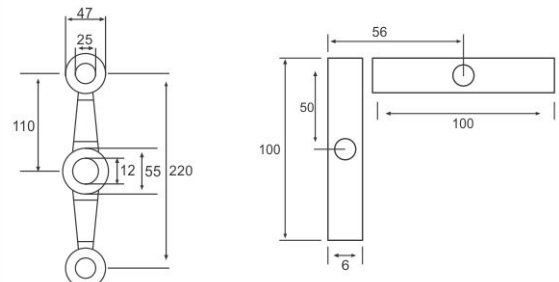
**QSP-B4** Finish : Matt Glossy  
Four Way Spider without Fin MRP : 3375/- 3625/-

- Specification**
- Four Way Spider without fin to hold four glass panel together with fixed structure
  - Materials : Stainless Steel 316 Grade
  - Hold glass with the help of articulated/fix routels.
  - Designed to Hold with fix Structure



**QSP-B4 (90°)** Finish : Matt Glossy  
Four Way Spider without Fin (90°) MRP : 4275/- 4625/-

- Specification**
- Four Way Spider without fin 90° to hold four glass panel together with fixed structure
  - Materials : Stainless Steel 316 Grade
  - Hold glass with the help of articulated/fix routels.
  - Designed to Hold with fix Structure



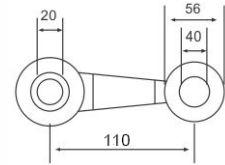
• Available in 220mm arm distance. Dimensions are subject to change. Please refer to actual product for hole preparation. Customized solutions can be provided according to the requirements of the project.(Spider, Fin / Splice Plates & Routels)

**SPIDER WITHOUT FIN(200mm)**



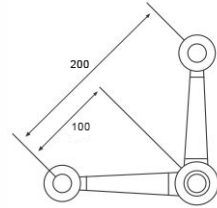
**QSP-B11** Finish : Matt Glossy  
One Way Spider without Fin MRP : 1297/- 1350/-

- Specification**
- 110 mm arm
  - One Way Spider without fin to hold the glass at one point
  - Materials : Stainless Steel 316 Grade
  - Hold glass with the help of articulated/fix routels.
  - Designed to Hold with fix Structure



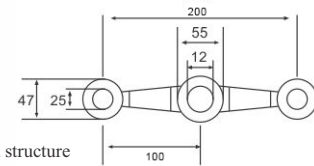
**QSP-B22 (90°)** Finish : Matt Glossy  
Two Way Spider 90° without Fin MRP : 2600/- 2800/-

- Specification**
- Two Way Spider without fin to hold two glass panels at 90° with fixed structure
  - Materials : Stainless Steel 316 Grade
  - Hold glass with the help of articulated/fix routels.
  - Designed to Hold with fix Structure



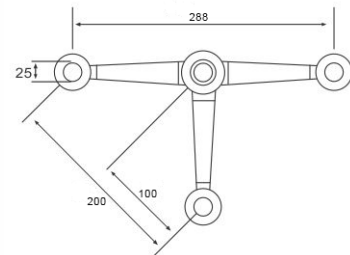
**QSP-B22 (180°)** Finish : Matt Glossy  
Two Way Spider 180° without Fin MRP : 2272/- 2472/-

- Specification**
- 200 mm arm
  - Two Way Spider without fin to hold two glass panels at 180° with fixed structure
  - Materials : Stainless Steel 316 Grade
  - Hold glass with the help of articulated/fix routels.
  - Designed to Hold with fix Structure



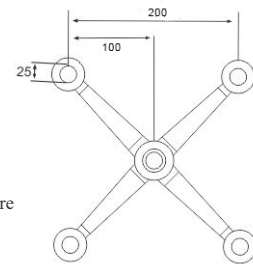
**QSP-B33** Finish : Matt Glossy  
Three Way Spider without Fin MRP : 2875/- 3125/-

- Specification**
- Three Way Spider without fin to hold three glass panels
  - Materials : Stainless Steel 316 Grade
  - Hold glass with the help of articulated/fix routels.
  - Designed to Hold with fix Structure



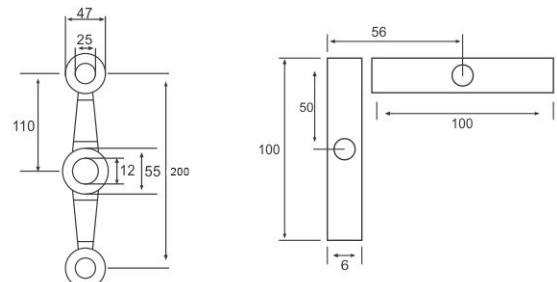
**QSP-B44** Finish : Matt Glossy  
Four Way Spider without Fin MRP : 3375/- 3625/-

- Specification**
- Four Way Spider without fin to hold four glass panel together with fixed structure
  - Materials : Stainless Steel 316 Grade
  - Hold glass with the help of articulated/fix routels.
  - Designed to Hold with fix Structure



**QSP-B44 (90°)** Finish : Matt Glossy  
Four Way Spider without Fin (90°) MRP : 4275/- 4625/-

- Specification**
- Four Way Spider without fin 90° to hold four glass panel together with fixed structure
  - Materials : Stainless Steel 316 Grade
  - Hold glass with the help of articulated/fix routels.
  - Designed to Hold with fix Structure

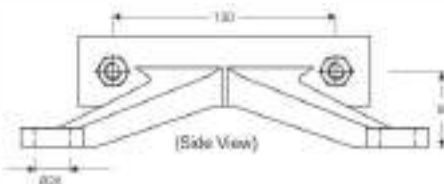


• Available in 200mm arm distance. Dimensions are subject to change. Please refer to actual product for hole preparation. Customized solutions can be provided according to the requirements of the project.(Spider, Fin / Splice Plates & Routels)



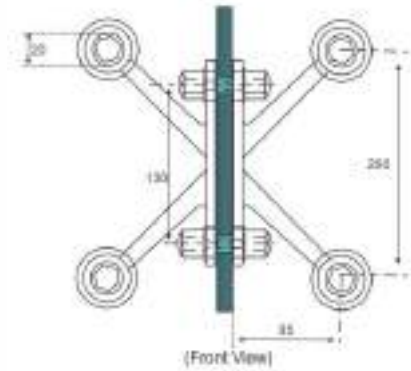
**QSP-A4**  
Four Way Spider

Finish : Matt  
MRP : 4125/-  
Glossy 4331/-



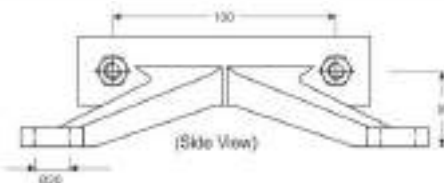
**Specification**

- Four Way Spider with fin to suit four panel glass assembly
- Materials : Stainless Steel 316 Grade
- With gasket & teflon washers to prevent glass from damage
- Hold glass with the help of articulated/fix routels



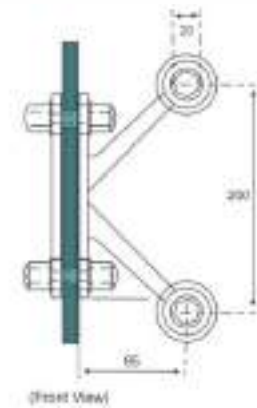
**QSP-A44**  
Two Way Spider (Wall Mounted)

Finish : Matt  
MRP : 2250/-  
Glossy 2375/-



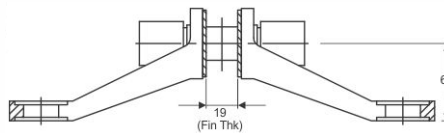
**Specification**

- Two Way Spider with fin to suit four panel glass assembly
- Materials : Stainless Steel 316 Grade
- With gasket & teflon washers to prevent glass from damage
- Hold glass with the help of articulated/fix routels



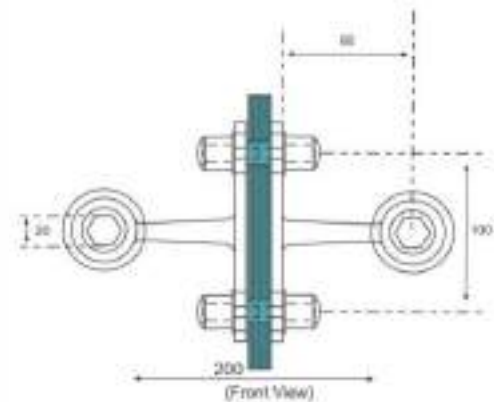
**QSP-A2**  
Two Way Spider

Finish : Matt  
MRP : 3345/-  
Glossy 3720/-



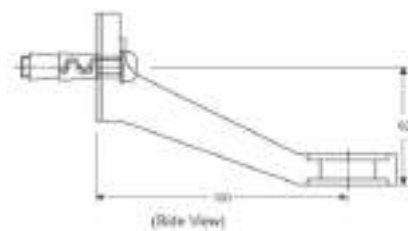
**Specification**

- Two Way Spider with fin to suit four panel glass assembly
- Materials : Stainless Steel 316 Grade
- With gasket & teflon washers to prevent glass from damage
- Hold glass with the help of articulated/fix routels



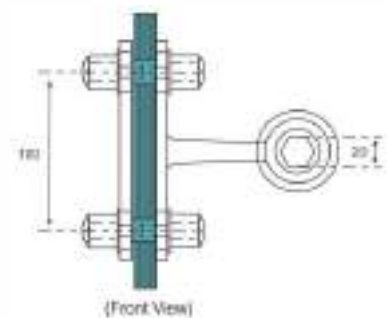
**QSP-A22**  
One Way Spider (Wall Mounted)

Finish : Matt  
MRP : 1775/-  
Glossy 2025/-



**Specification**

- One Way Spider with fin to suit four panel glass assembly
- Materials : Stainless Steel 316 Grade
- With gasket & teflon washers to prevent glass from damage
- Hold glass with the help of articulated/fix routels

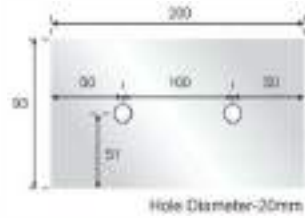


• Available in 200 arm distance. Dimensions are subject to change. Please refer to actual product for hole preparation. Customized solutions can be provided according to the requirements of the project.(Spider, Fin / Splice Plates & Routels)



**Specification**

- Two point holding of fin
- Finish : Satin Stainless Steel (SSS)
- Materials : Stainless Steel 316 Grade
- With teflon washers to prevent glass from damage



**QFP-200**  
Fin Plate (200mm)

Finish : Matt      Glossy  
MRP : 3500/-      4000/-



**Specification**

- Three point holding of fin
- Finish : Satin Stainless Steel (SSS)
- Materials : Stainless Steel 316 Grade
- With teflon washers to prevent glass from damage



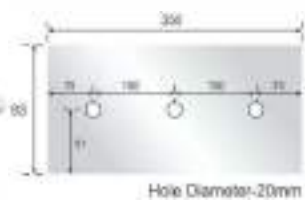
**QFP-300**  
Fin Plate (300mm)

Finish : Matt      Glossy  
MRP : 5250/-      6000/-



**Specification**

- Three point holding of fin
- Finish : Satin Stainless Steel (SSS)
- Materials : Stainless Steel 316 Grade
- With teflon washers to prevent glass from damage



**QFP-350**  
Fin Plate (350mm)

Finish : Matt      Glossy  
MRP : 6125/-      7000/-



**Specification**

- Three point holding of fin
- Finish : Satin Stainless Steel (SSS)
- Materials : Stainless Steel 316 Grade
- With teflon washers to prevent glass from damage



**QFP-400**  
Fin Plate (400mm)

Finish : Matt      Glossy  
MRP : 7000/-      8000/-

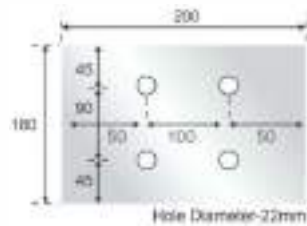




**QSP-200**  
Splice Plate (200mm)

**Specification**

- Two point holding with each fin part
- Finish : Satin Stainless Steel (SSS)
- Materials : Stainless Steel 316 Grade
- With teflon washers to prevent glass from damage



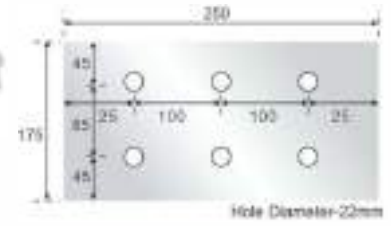
Finish : Matt    Glossy  
MRP : 3500/-    4000/-



**QSP-250**  
Splice Plate (250mm)

**Specification**

- Three point holding with each fin part
- Finish : Satin Stainless Steel (SSS)
- Materials : Stainless Steel 316 Grade
- With teflon washers to prevent glass from damage



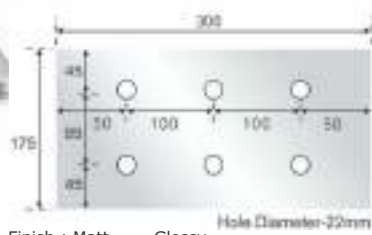
Finish : Matt    Glossy  
MRP : 4375/-    5000/-



**QSP-300**  
Splice Plate (300mm)

**Specification**

- Three point holding with each fin part
- Finish : Satin Stainless Steel (SSS)
- Materials : Stainless Steel 316 Grade
- With teflon washers to prevent glass from damage



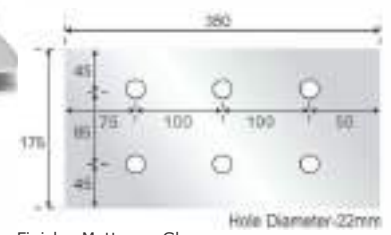
Finish : Matt    Glossy  
MRP : 5250/-    6000/-



**QFP-350**  
Splice Plate (350mm)

**Specification**

- Three point holding with each fin part
- Finish : Satin Stainless Steel (SSS)
- Materials : Stainless Steel 316 Grade
- With teflon washers to prevent glass from damage



Finish : Matt    Glossy  
MRP : 6125/-    7000/-

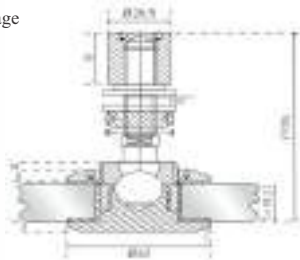
• Available in 200 & 220mm arm distance. Dimensions are subject to change. Please refer to actual product for hole preparation. Customized solutions can be provided according to the requirements of the project.(Spider, Fin / Splice Plates & Routers)



**ARTICULATED ROUTELS**

**Specification**

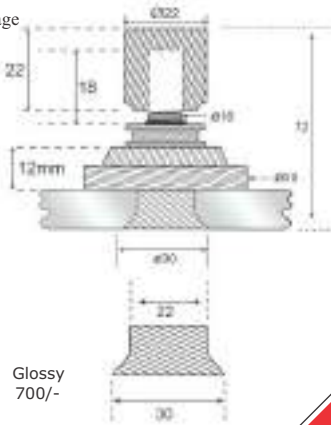
- Articulated flat head Routel to be used along with spider to hold glass
- Materials : Stainless Steel 304 Grade
- With teflon washers to prevent glass from damage
- Adjustable upto 15mm glass thickness



**QSP-AFB 36FL** Finish : Matt    Glossy  
Articulated Routel    MRP : 925/-    1125/-

**Specification**

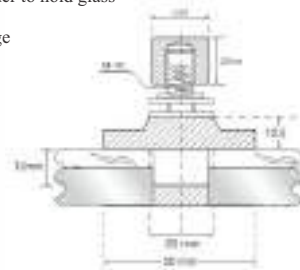
- Counter Sunk Routel to be used along with spider to hold glass
- Materials : Stainless Steel 304 Grade
- With teflon washers to prevent glass from damage
- Adjustable upto 15mm glass thickness



**QSP-CS** Finish : Matt    Glossy  
Counter Sunk Routel    MRP : 525/-    700/-

**Specification**

- Fixed flat head Routel to be used along with spider to hold glass
- Materials : Stainless Steel 304 Grade
- With teflon washers to prevent glass from damage
- Adjustable upto 15mm glass thickness
- Smaller in sizes



**QSP-FB FL** Finish : Matt    Glossy  
Fixed Routel (Flat Head)    MRP : 762/-    887/-



**QSP-01** Finish : Matt    Glossy  
Iron Assembly    MRP : 825/-    950/-





# DOOR HANDLES





**QGH-11**  
Glass Door Handle 'D' Type

**SS-202**

Available Size	Matt	Combi
"D" // "H" 22x200	525/-	575/-
"D" // "H" 22x300	775/-	850/-
"D" // "H" 25x300	825/-	925/-
"D" // "H" 25x450	1250/-	1375/-
"D" // "H" 25x600	1675/-	1850/-
"H" 32x300	1025/-	1125/-
"H" 32x450	1537/-	1675/-
"H" 32x600	2025/-	2225/-
"H" 38x300	1187/-	1250/-
"H" 38x450	1750/-	1875/-
"H" 38x600	2350/-	2500/-



**QGH-77**  
Glass Door Handle 'S' Type  
Size : 25x300  
MRP : 1687/-



**QGH-44**  
Glass Door Handle 'PSD' Type  
Size : 25x300  
MRP : 1875/-



**QGH-55**  
Glass Door Handle 'H' Type

**SS-304**

Available Size	Matt	Combi
"D" // "H" 22x200	650/-	700/-
"D" // "H" 22x300	950/-	1037/-
"D" // "H" 25x300	1037/-	1150/-
"D" // "H" 25x450	1562/-	1687/-
"D" // "H" 25x600	2075/-	2250/-
"H" 32x300	1350/-	1425/-
"H" 32x450	2025/-	2150/-
"H" 32x600	2700/-	2850/-
"H" 38x300	1500/-	1600/-
"H" 38x450	2250/-	2397/-
"H" 38x600	3000/-	3175/-



**QGH-WSS-11**  
Glass Door Handle 'L' Type  
Size : 25x300  
MRP : 1335/-



**QGH-WSS-22**  
Glass Door Handle 'H' Type  
Size : 25x300  
MRP : 1425/-

**Door Handles With Lock**



**QGH-WSS-33**  
Glass Door Handle  
Size : 25x450  
MRP : 1875/-



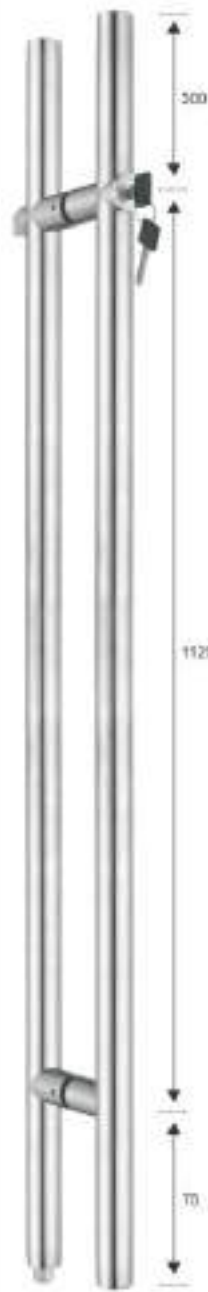
**QGH-WSS-44**  
Glass Door Handle  
Size : 25x450  
MRP : 2000/-



**QGH-WSS-55**  
Glass Door Handle  
Size : 25x25x300  
MRP : 2375/-



**QGH-WSS-66**  
Glass Door Handle  
Size : 25x25x300  
MRP : 2125/-



**QGHL-55**  
Size : 35x1500  
MRP : 14000/-



**QGHL-66**  
Size : 25x1340  
MRP : 13250/-

**Shower Handles**



**QDH-TB-01**  
Size : 19x150x450  
Finish : Matt Glossy  
MRP : 1175/- 1300/-  
Size : 22x200x400  
Finish : Matt Glossy  
MRP : 1325/- 1450/-



**QDH-TB-02**  
Size : 20x20x150x450  
Finish : Matt Glossy  
MRP : 1525/- 1725/-  
Size : 12x15x200x400  
Finish : Matt Glossy  
MRP : 1675/- 1850/-



**MAIN DOOR HANDLE**



**QD-1001**

Finish : CP Matt Antique  
MRP : 1487/- 1487/- 1525/-



**QD-1002**

Finish : CP Matt Antique  
MRP : 1487/- 1487/- 1525/-



**QD-1003**

Finish : CP Matt Antique  
MRP : 1412/- 1412/- 1450/-



**QD-1004**

Finish : CP Matt Antique  
MRP : 1737/- 1737/- 1775/-



**QD-1005**

Finish : CP Matt Antique  
MRP : 987/- 987/- 1025/-



**QD-1006**

Finish : CP Matt Antique  
MRP : 962/- 962/- 1000/-



**QD-1007**

Finish : CP Matt Antique  
MRP : 1412/- 1412/- 1450/-



**QD-1008**

Finish : CP Matt Antique  
MRP : 937/- 937/- 975/-



**QD-1009**

Finish : CP Matt Antique  
MRP : 862/- 862/- 900/-



**QD-1010**

Finish : CP Matt Antique  
MRP : 862/- 862/- 900/-



**QD-1011**

Finish : CP Matt Gold  
MRP : 4575/- 4346/- 5125/-



**QD-1012**

Finish : CP Matt Gold  
MRP : 4575/- 4346/- 5125/-



**BRACKET SHELF HOLDERS**

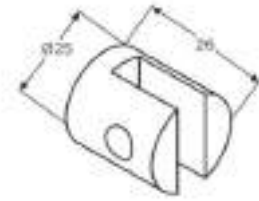


**QSH-0001**  
Bracket Shelf Holder

Finish : Matt    Glossy  
MRP : 262/-    275/-

**Specification**

- Grub screw for firm holding
- For glass thickness of 8/10mm
- No glass preparation required
- Stainless Steel Grade 304

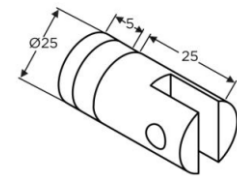


**QSH-0002**  
Bracket Shelf Holder

Finish : Matt    Glossy  
MRP : 312/-    325/-

**Specification**

- Grub screw for firm holding
- For glass thickness of 8/10mm
- Stainless Steel Grade 304

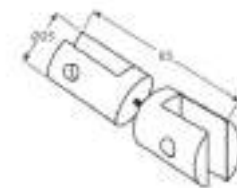


**QSH-0003**  
Bracket Shelf Holder

Finish : Matt    Glossy  
MRP : 350/-    375/-

**Specification**

- Grub screw for firm holding
- For glass thickness of 8/10mm
- Gaskets to prevent glass damage
- No glass preparation required
- Stainless Steel Grade 304

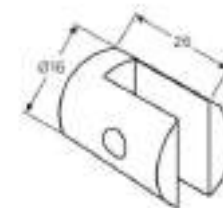


**QSH-0004**  
Bracket Shelf Holder

Finish : Matt    Glossy  
MRP : 312/-    325/-

**Specification**

- Grub screw for firm holding
- No glass preparation required
- For glass thickness of 6mm
- Stainless Steel Grade 304

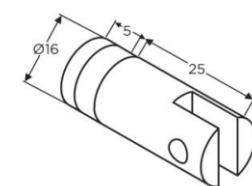


**QSH-0005**  
Bracket Shelf Holder

Finish : Matt    Glossy  
MRP : 425/-    450/-

**Specification**

- Grub screw for firm holding
- For glass thickness of 6mm
- Stainless Steel Grade 304

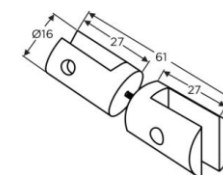


**QSH-0006**  
Bracket Shelf Holder

Finish : Matt    Glossy  
MRP : 525/-    575/-

**Specification**

- Grub screw for firm holding
- For a maximum glass thickness of 6mm
- For 10mm thickness of vertical glass
- With gaskets to prevent damage to glass
- Stainless Steel Grade 304



**NEW ARRIVAL**

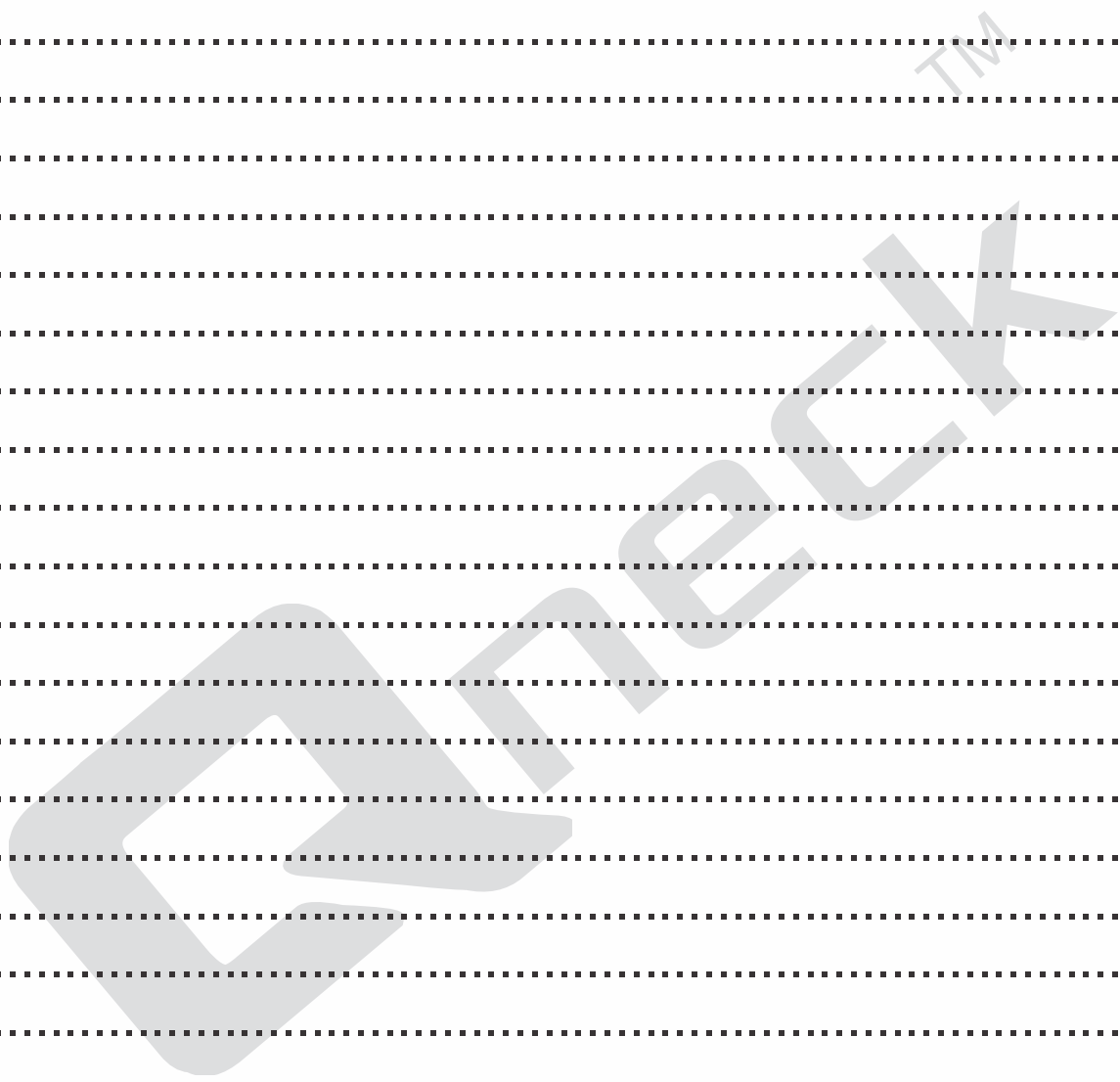


**Casting Glass Balustrade**

Finish : Matt    Glossy  
MRP : 19475/-    20500/-

Notes :

A series of horizontal dotted lines for writing notes, spanning the width of the page.





**Qneck**<sup>TM</sup>

Glass Architectural Hardware Product



Product photos shown in catalogue are only the visual and may differ from original.  
the technical presentation and dimension in illustrations and drawings shown are for reference only.  
please refer the original product for glass cutout.